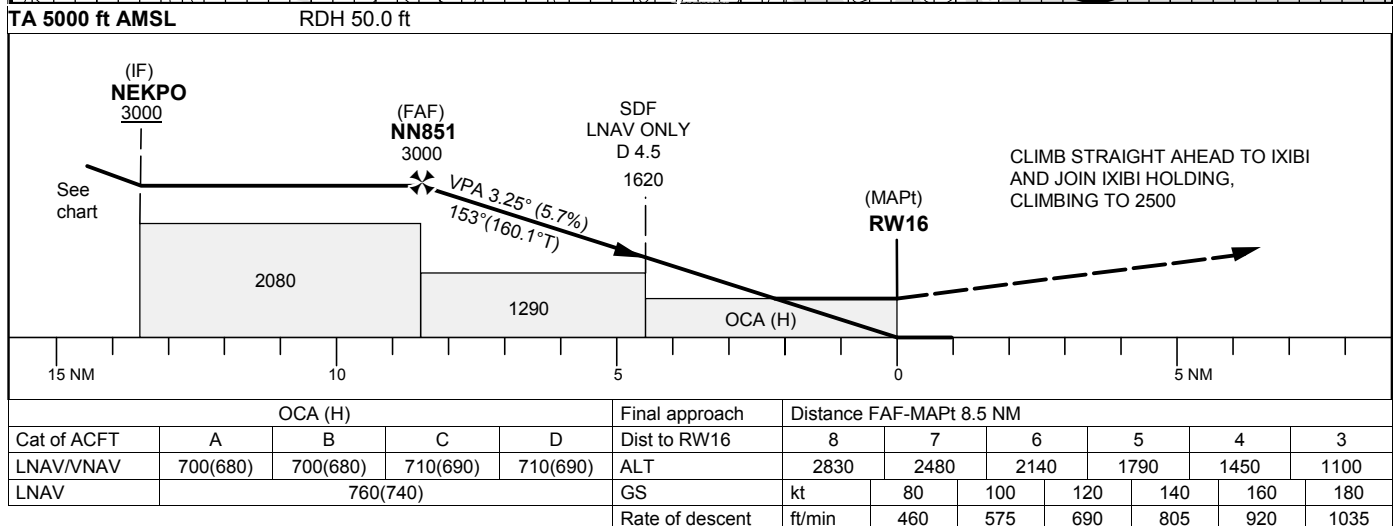
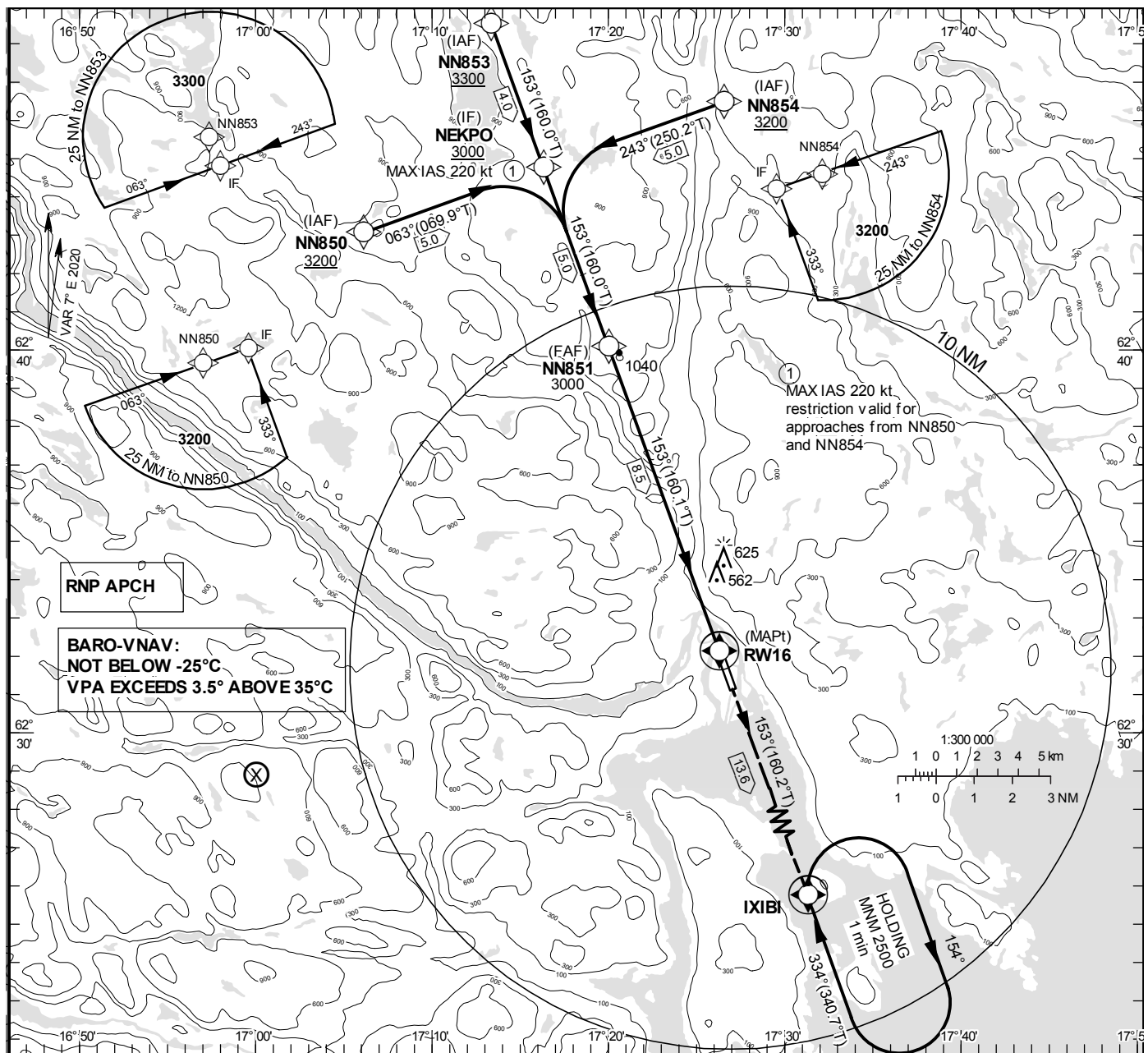


SUNDSVALL-TIMRÅ**INSTRUMENT
APPROACH
CHART – ICAO****THR ELEV 17.1 ft, AD ELEV 17 ft**OCH are related to THR.
BRG are MAG (True).
ALT, HGT and ELEV in ft.SUNDSVALL TOWER 129.555
SUNDSVALL ATIS 127.405**RNP RWY 16
(LNAV, LNAV/VNAV only)**

CHANGE: Editorial

SUNDSVALL-TIMRÅ

RNP RWY 16 via NN850

Path Desc	Waypoint Identifier	Fly-over	Course °M(°T)	Dist (NM)	Turn Dir	Altitude	Speed	VPA/ RDH	Rec Navaid	Navigation Specification
IF	NN850	-	-	-	-	+3200	-	-	-	RNP APCH
TF	NEKPO	-	063°(069.9°)	5.0	-	+3000	-220	-	-	RNP APCH

RNP RWY 16 via NN853

Path Desc	Waypoint Identifier	Fly-over	Course °M(°T)	Dist (NM)	Turn Dir	Altitude	Speed	VPA/ RDH	Rec Navaid	Navigation Specification
IF	NN853	-	-	-	-	+3300	-	-	-	RNP APCH
TF	NEKPO	-	153°(160.0°)	4.0	-	+3000	-	-	-	RNP APCH

RNP RWY 16 via NN854

Path Desc	Waypoint Identifier	Fly-over	Course °M(°T)	Dist (NM)	Turn Dir	Altitude	Speed	VPA/ RDH	Rec Navaid	Navigation Specification
IF	NN854	-	-	-	-	+3200	-	-	-	RNP APCH
TF	NEKPO	-	243°(250.2°)	5.0	-	+3000	-220	-	-	RNP APCH

Path Desc	Waypoint Identifier	Fly-over	Course °M(°T)	Dist (NM)	Turn Dir	Altitude	Speed	VPA/ RDH	Rec Navaid	Navigation Specification
IF	NEKPO	-	-	-	-	+3000	-	-	-	RNP APCH
TF	NN851	-	153°(160.0°)	5.0	-	@3000	-	-	-	RNP APCH
TF	RW16	Y	153°(160.1°)	8.5	-	@67	-	-3.25/50	-	RNP APCH
TF	IXIBI	Y	153°(160.2°)	13.6	-	-	-	-	-	RNP APCH
HM	IXIBI	Y	334°(340.7°)	-	R	+2500	-	-	-	RNAV 1